



# Mobility between Europe and Latin America

A study into the barriers to exchange in the Netherlands, Germany and Latin America



Universiteit Leiden  
The Netherlands

By: Professor R.T. Griffiths  
[r.t.griffiths@hum.leidenuniv.nl](mailto:r.t.griffiths@hum.leidenuniv.nl)

Leiden University. The university to discover.

# Structure

- Point out the relevance of the study
  - Graphs and Numbers
- Parameters and research subjects
  - Students versus Staff
- Preliminary Results and Conclusions

# Benefits of International Student Mobility

## Students

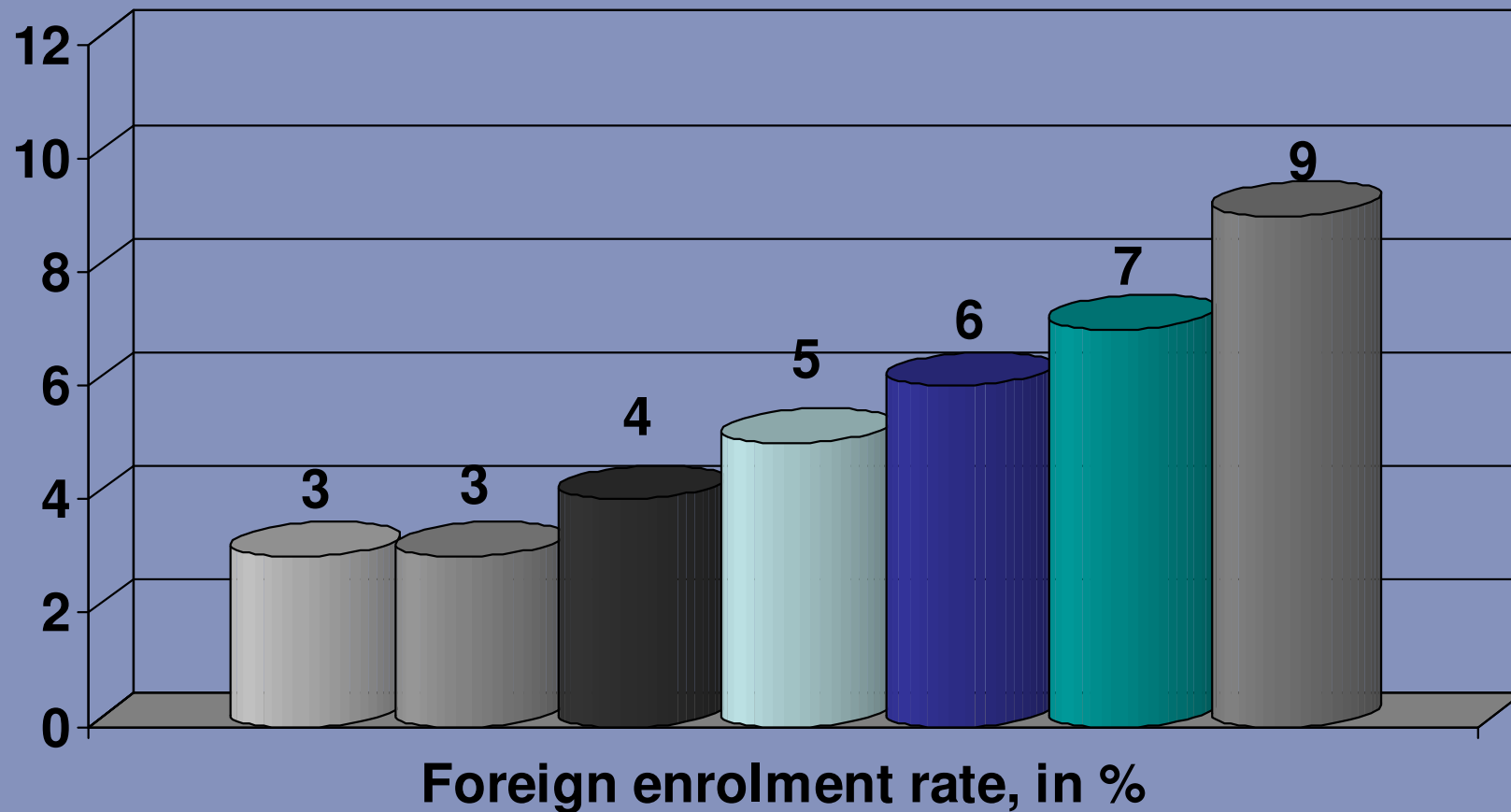
- More Choice
- Higher Level
- Experience
- Avoid fees and *Numerus clausus*

## Home Country

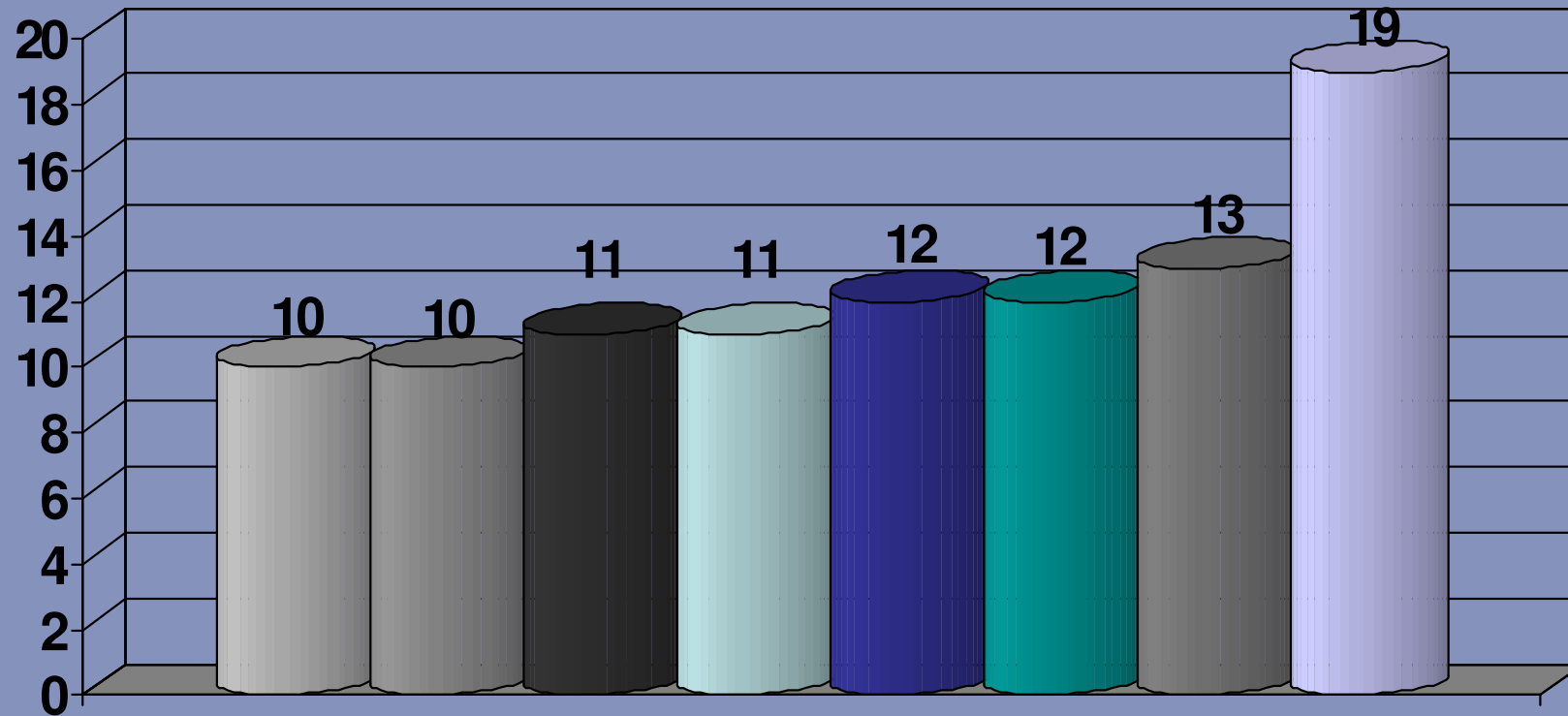
- Interstate links
- Human Capital

## University

- More effective scientific flows
- Academic Reputation
- Dynamism for Academic programs



■ France ■ Italy ■ Ireland ■ the Netherlands ■ Belgium (F) ■ Germany ■ Finland



Foreign study-related stay, in %

Ireland
  France
  Italy
  Belgium (W/B)
  Belgium (F)
  Finland
  the Netherlands
  Germany

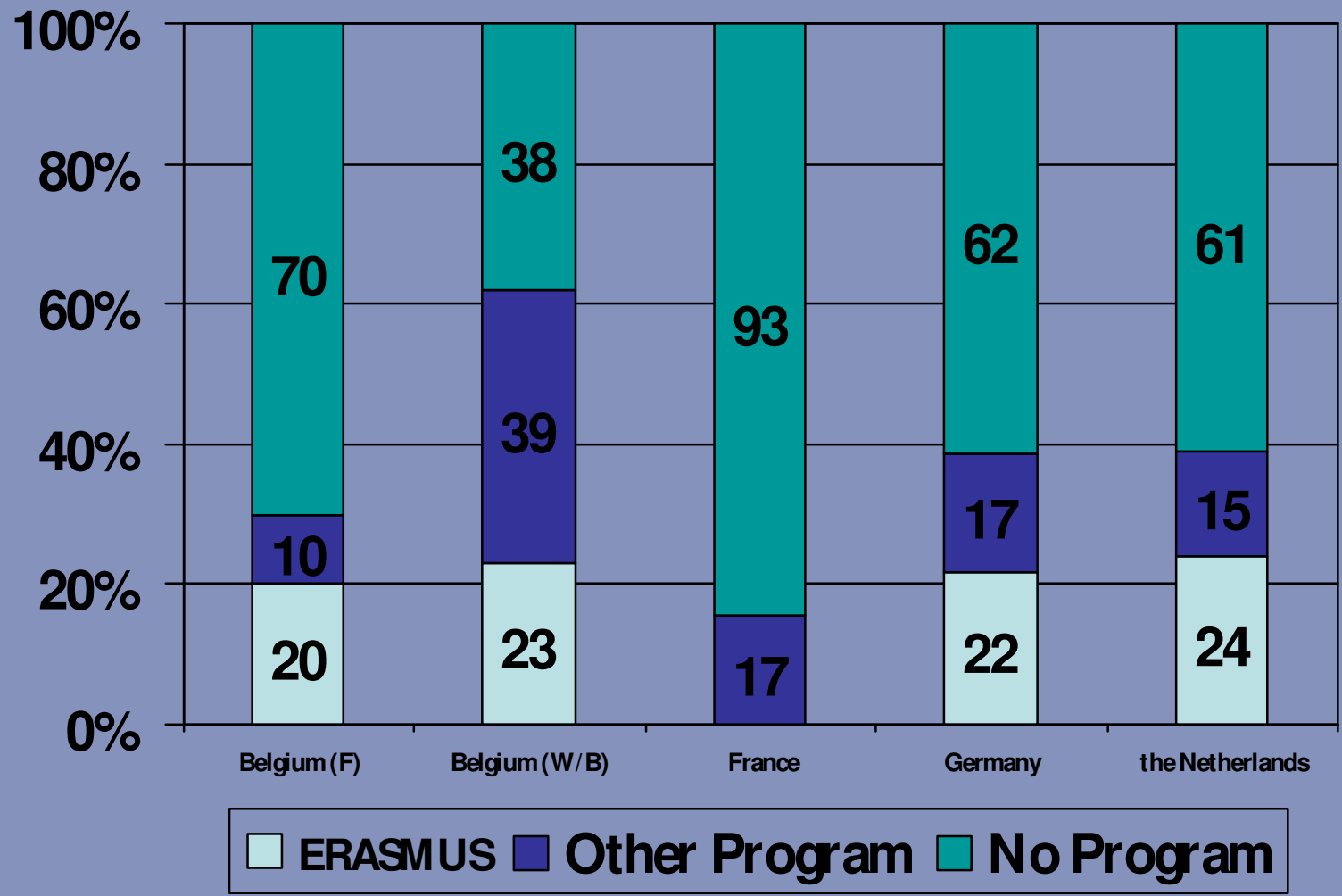
NB - Among the purposes of foreign study-related stay, are:

Studies

Internships; and

Language courses.

Most frequent programs, in %



# Students – Factors & Barriers

[Organized Student Mobility]

[Study Abroad]

- Language proficiency
- Having been abroad prior to studies
- Income (& parents' income)
- Knowledge of (possible) host university
- Stage of their studies (more ISM towards end)
- Field of study (i.e. Humanities & Arts, Engineering)

# Research Strategy

- Student & Staff Mobility through use of **survey**
- Supported by **statistical information** on figures relating to mobility and foreign stay of students and staff.

## Stage I- Leiden



Latin American Studies	I. Academic Staff II. Students
Engineering	I. Academic Staff II. Students
Law	I. Academic Staff II. Students



Stage II- Other Dutch  
Universities

Groningen

Utrecht

Amsterdam

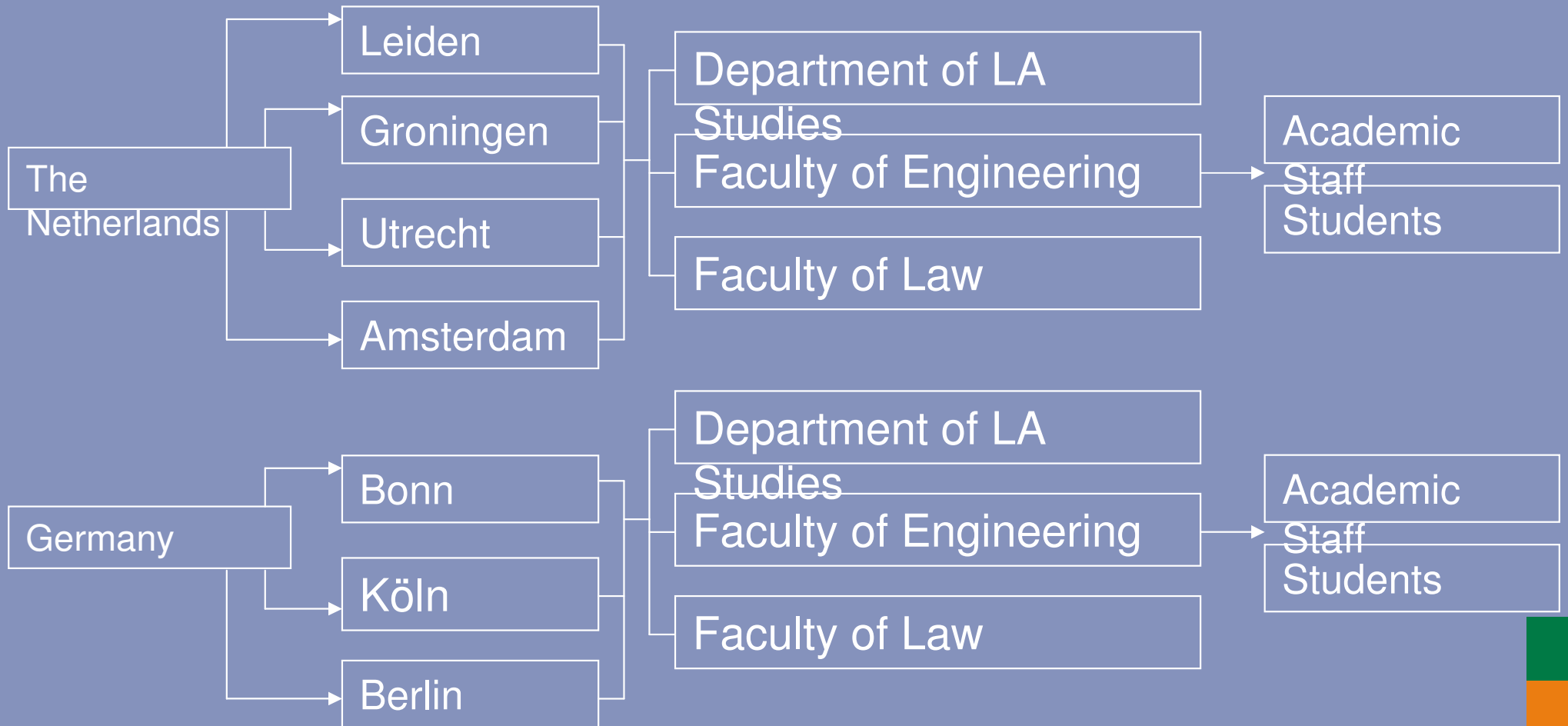
Stage III- German Universities

Bonn

Köln

Berlin

# Graphic Overview



# The Survey- Academic Staff

Please mark the relevance of each factor in importance from 1 to 5

#	(Possible) Barriers to exchange	Importance
1	It is difficult to locate the knowledge-base in the university	
2	There are too many countries, I don't know which country I should choose.	
3	I have no (or little) knowledge of the structure and degrees that the universities there offer	
4	I don't know if the programs they offer run parallel to the program (semester, year) offered in Leiden	
5	The funding for the exchange in terms of funds (money) available	
6	The funding for the exchange in terms of paperwork	
7	The work-load at my own department is too big for me to be able to teach at another university	

1 = This factor is not relevant at all; 2 = This factor is relevant, but I do not consider it important; 3 = This factor does play role but it is not critical in my decision; 4 = This factor greatly affects my decision in a negative way; 5 = This factor is a barrier to exchange

# The Survey - Students

#	(Possible) Barrier to exchange	Importance
1	Finance – I think the experience of studying abroad is too expensive and I cannot finance it.	
2	Language (not knowing the home language of the country in which you want to study abroad)	
3	The academic year does not overlap	
4	The content of the program does not interest me	
5	The degree offered is not recognized in my home country/internationally	
6	There is no combination of work/internship and study possible	
7	My university/professor does not have any links or contacts with the universities I want to go to	
8	The status of the university or department is not appealing	
9	Lack of local knowledge	
10	Lack of assistance/information provided by the university	

# Preliminary Results & Conclusions

## Academic Staff

### [From Leiden to Latin America]

- Funding (paperwork & funds available)
- Work-load at own department is too big

### [Attracting staff from Latin America to Leiden]

- Lack of administrative and practical support university